

## *The Westridge*

2 bedroom

2 bathroom

2 garage

1688 sq.ft.

2 story



The Classic

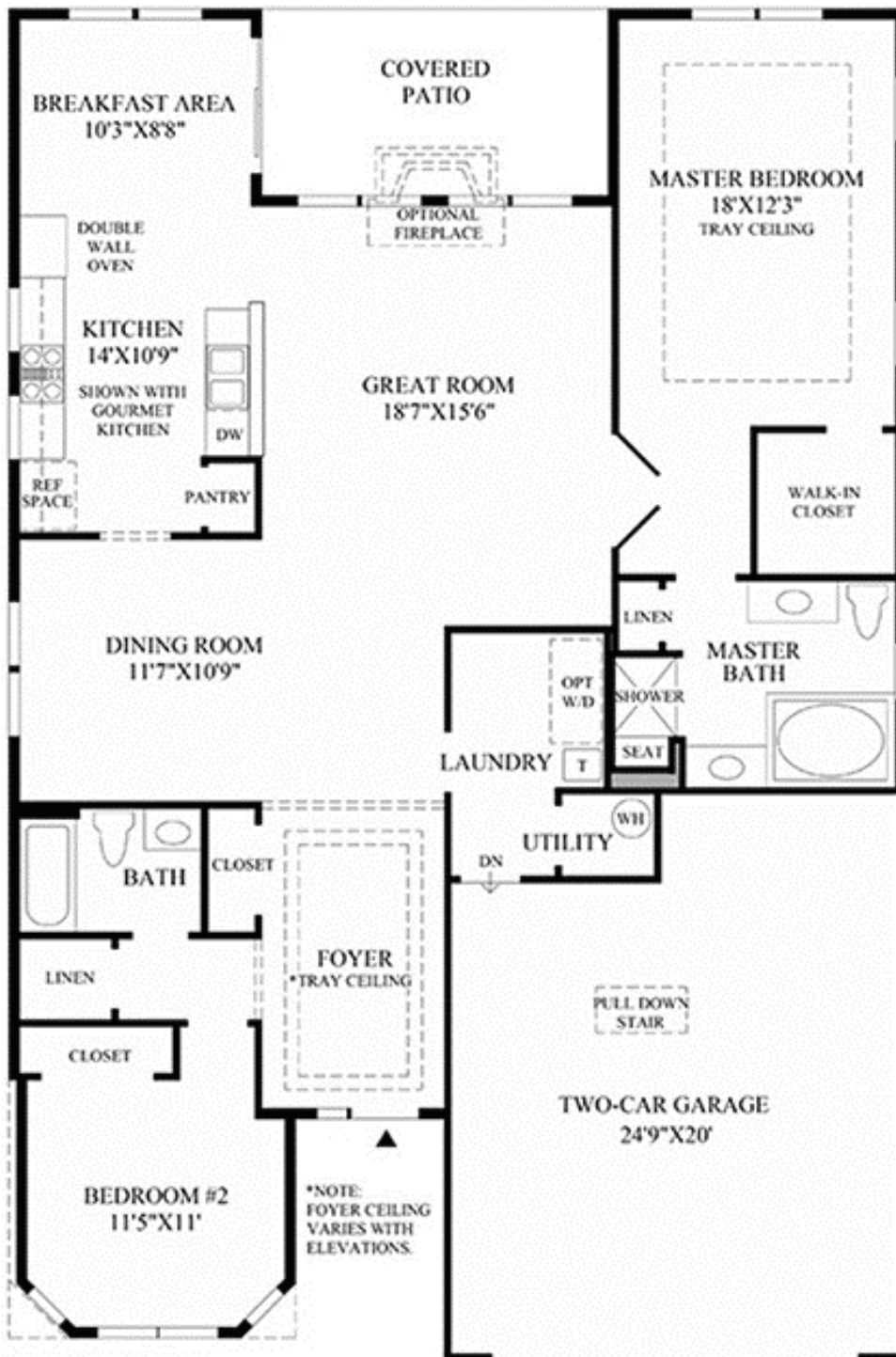
The expansive first-floor master bedroom of the stylish Westridge features a French-door entry; a tray ceiling; a large walk-in closet; and a spacious master bath with dual vanities, a linen closet, and a shower with a seat. The large kitchen and breakfast area open to the expansive great room. The delightful covered patio can be accessed through the breakfast area. Other highlights include a foyer with a tray ceiling, a convenient laundry, ten-foot ceilings throughout, and a two-car garage with pull-down stairs.



The Bordeaux

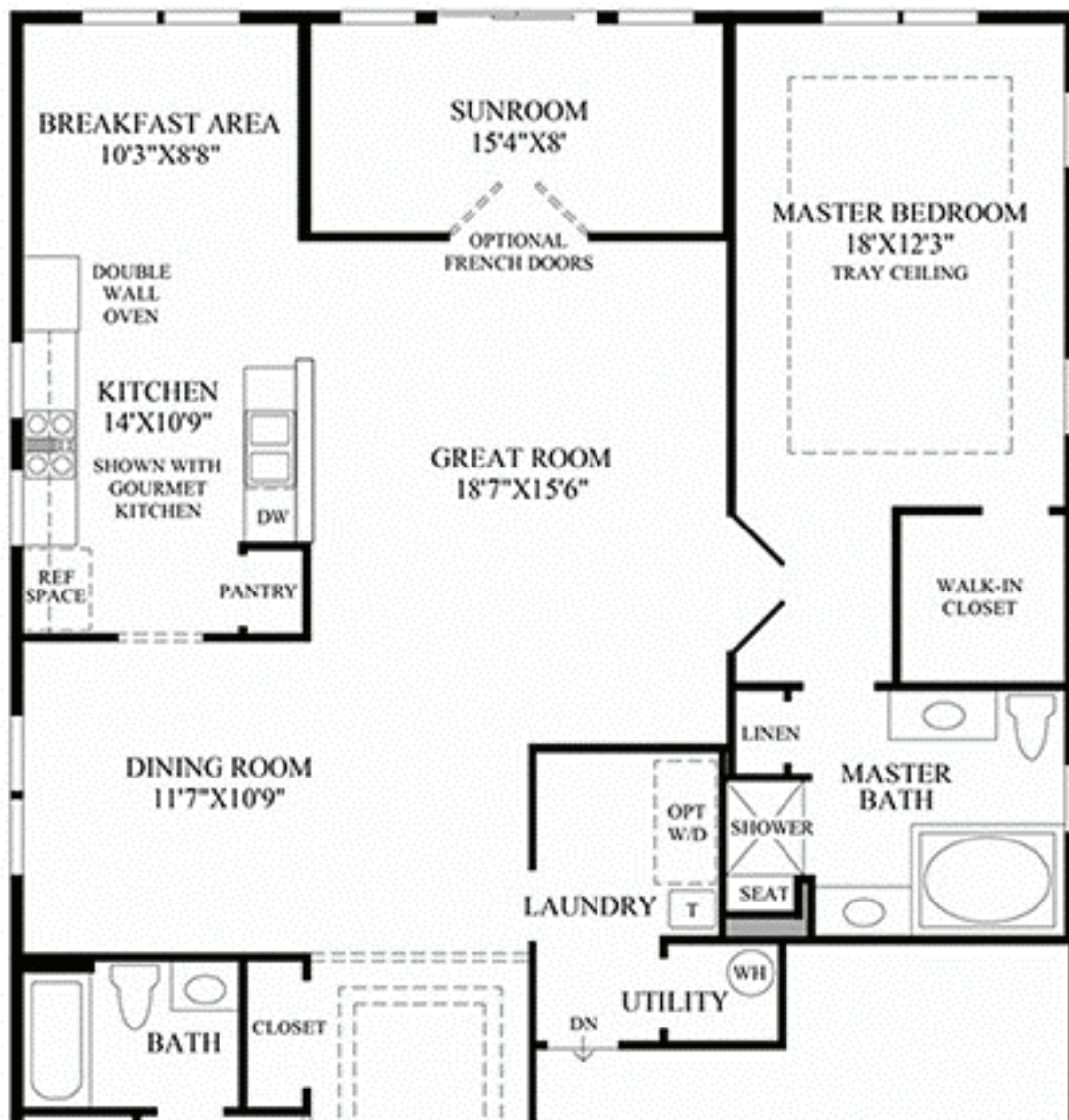


The Federal



CLASSIC, FEDERAL, AND PROVINCIAL ELEVATIONS INCLUDES A LARGER BEDROOM #2.

*Floor Plan*



OPTIONAL SARASOTA SUNROOM