

## *The Fairhaven*

2 bedroom

2 bathroom

2 garage

1909 sq.ft.

1 story



The Classic

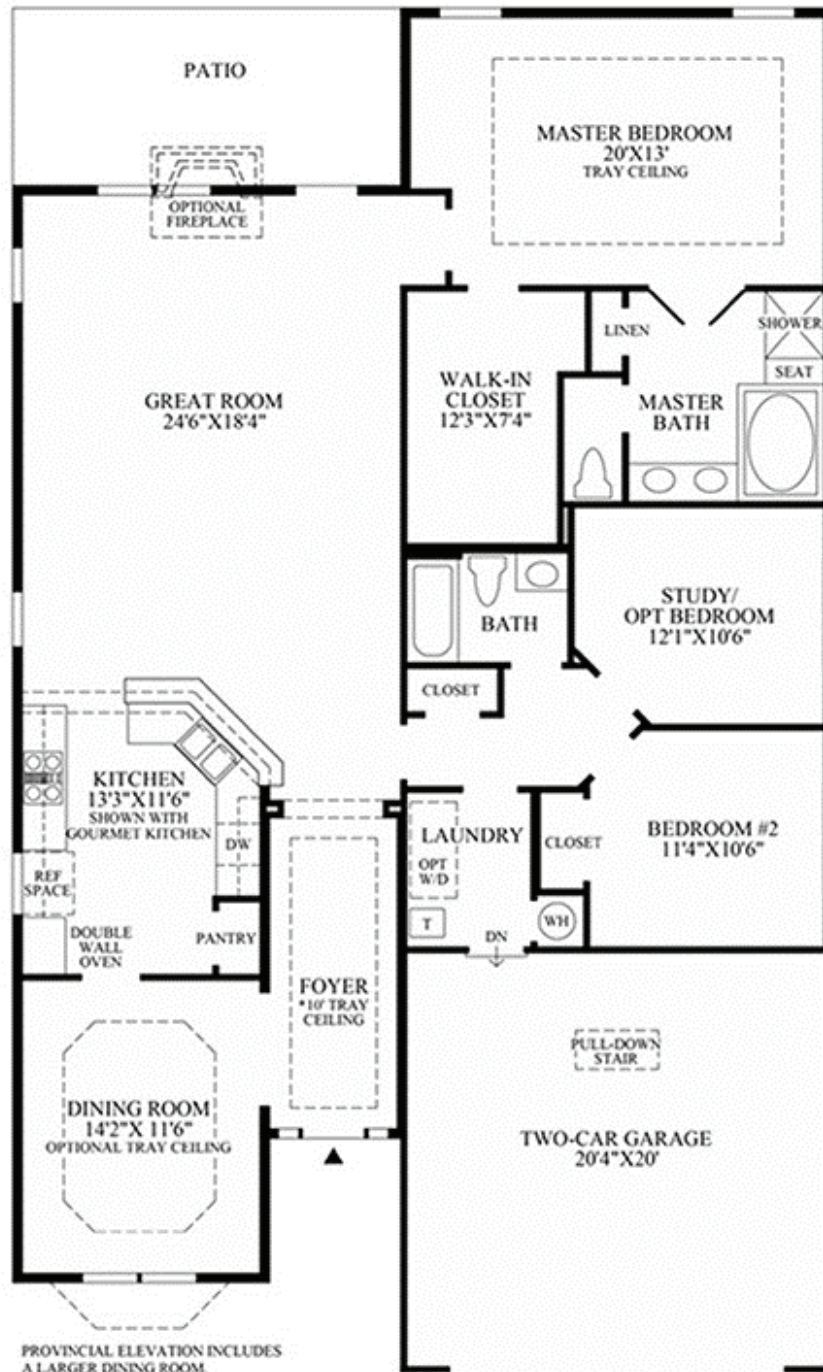
Welcome to your oasis - the Fairhaven features a convenient first-floor master suite that offers you the relaxation and rejuvenation you deserve. It includes a large bedroom area with a tray ceiling; an expansive walk-in closet; and French doors leading to a luxurious master bath with a sunken tub, a shower with a seat, a dual-sink vanity, a private toilet area, and a linen closet. When you wish to entertain, this home's formal dining room will accommodate many guests in gracious style. The Fairhaven also boasts a well-equipped kitchen with a pantry and a breakfast bar. Additional highlights include a spacious great room, a tucked-away study, a convenient laundry area, ten-foot ceilings throughout, and a two-car garage.



The Colonial

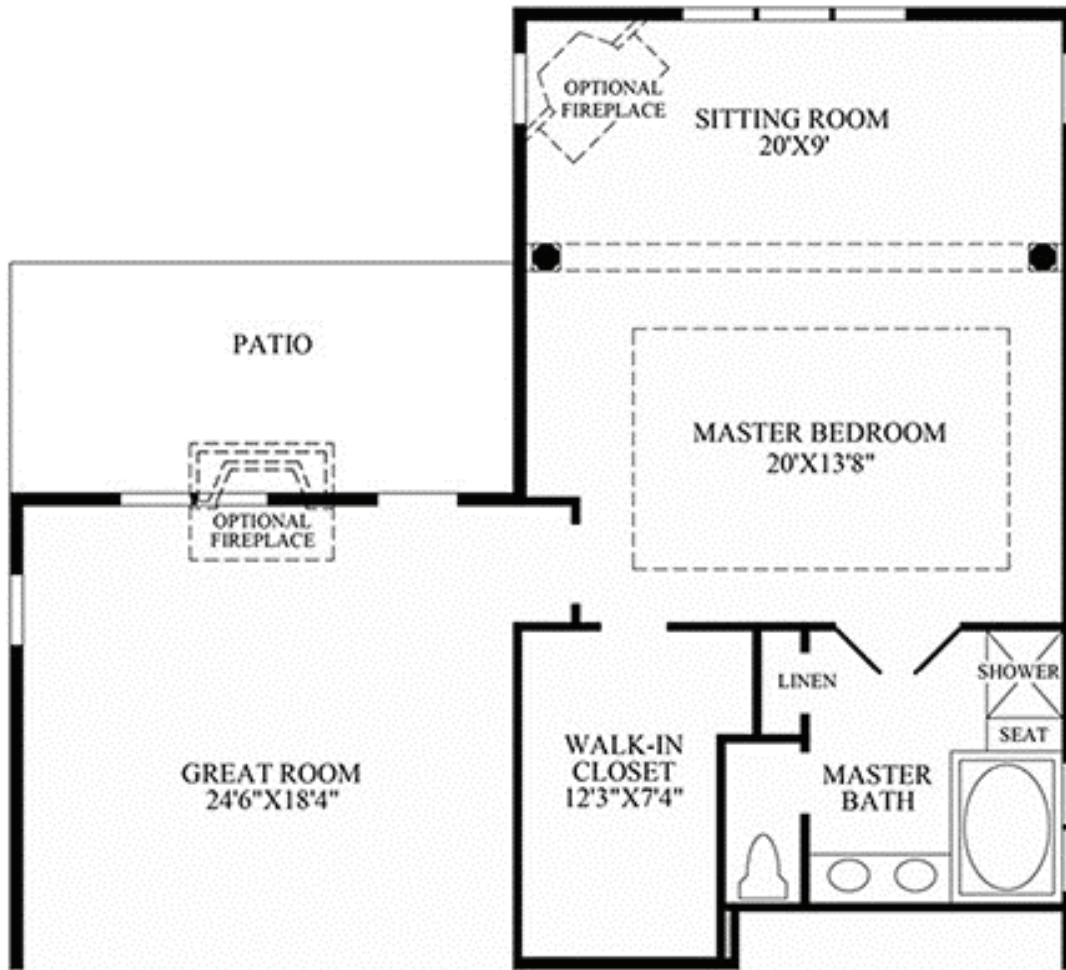


The Eastern Shore



\*FOYER INCLUDES A 14' TRAY CEILING WITH THE PROVINCIAL ELEVATION, 15' TRAY CEILING WITH THE EASTERN SHORE ELEVATION, AND A 15'7" FLAT CEILING WITH THE COLONIAL ELEVATION.

## Floor Plan



OPTIONAL GRAND MASTER SUITE