

# THE SAN REMO PROVINCIAL

---



ARTIST RENDITION

The stucco facade with quoined corners, handsome trim with keystones and elegant bay window boast a rich look for the San Remo Provincial.

# THE SAN REMO HERITAGE

---



ARTIST RENDITION

The San Remo Heritage features an elegant Palladian window over the front entry and a large box bay window accented by dentil molding.

# THE SAN REMO MANOR

---



ARTIST RENDITION

The San Remo Manor is accented by its simple roof lines, elegant bay window, recessed front entry and crown molding.

# THE SAN REMO CHATEAU

---



ARTIST RENDITION

The San Remo Chateau includes a stucco facade, decorative keystones and recessed front entry with sidelites flanked by two decorative half columns.

## THE SAN REMO COLLECTION

Foyer leads to a magnificent great room.

Convenient dining area is adjacent to the kitchen.

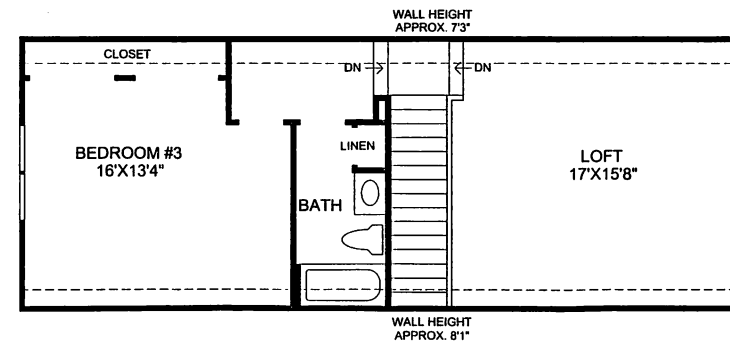
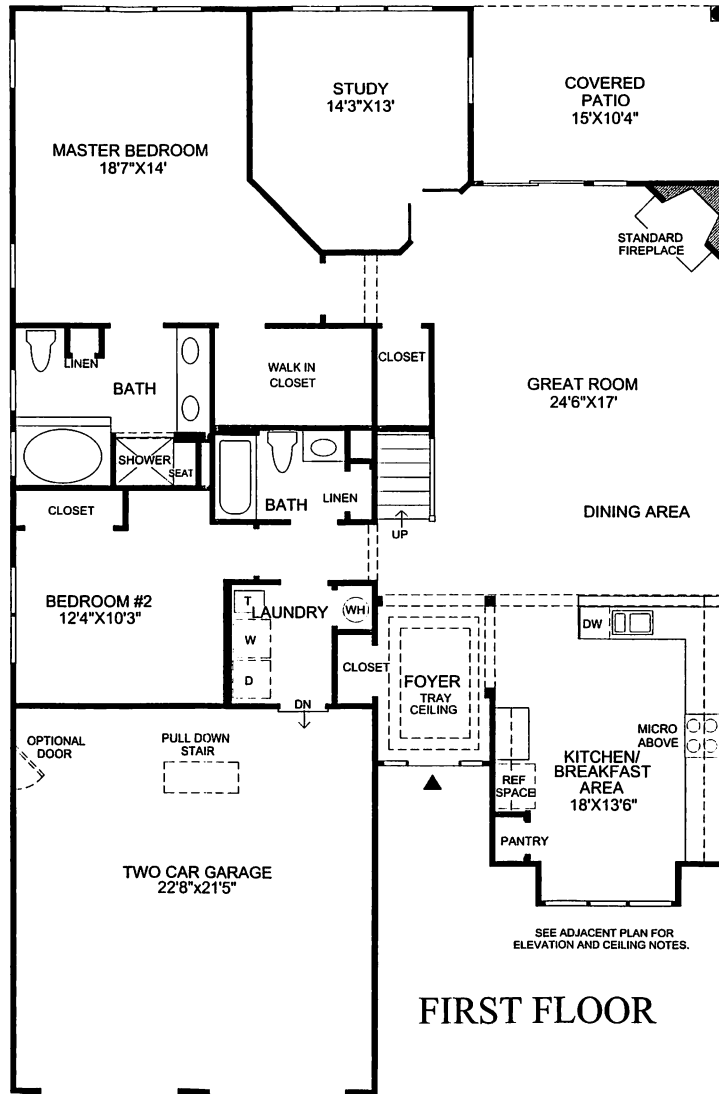
Spacious study with double door entry.

Well appointed kitchen with pantry.

Master bedroom suite includes large walk in closet, luxurious master bath with Roman tub and separate shower with seat.

Ten foot ceilings throughout the first floor.

2 bedrooms, 2 baths.



### SECOND FLOOR LOFT

SHOWN WITH OPTIONAL ADDITIONAL BATHROOM AND OPTIONAL ADDITIONAL BEDROOM

All room dimensions are approximate, shown to the maximum dimensions of each room, and are subject to field variation. Dimensions should not be used to calculate room square footage. Some windows and floor plans may vary with elevations. Some features may vary from community to community. Please consult a Sales Manager for details. Options purchased must be specified in exhibit B.

**Toll Brothers**  
America's Luxury Home Builder®  
www.tollbrothers.com

The floorplans and elevations of Toll Brothers homes are copyrighted. We have enforced and will continue to enforce our federal copyrights to protect the investment of our homebuyers.

This insert was produced using recycled products. ♻️