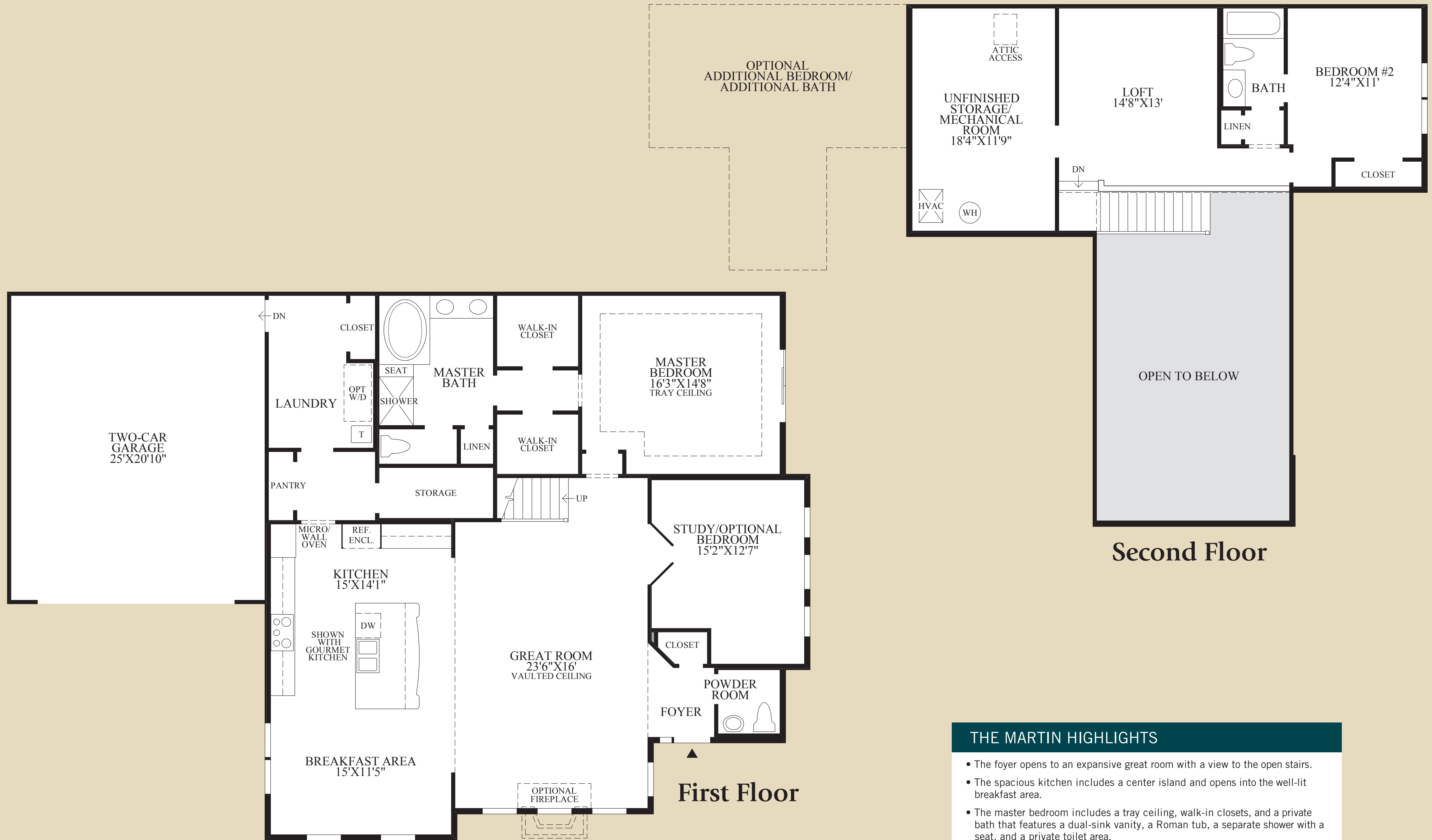


THE MARTIN

Toll Brothers
ACTIVE LIVING[®]

THE MARTIN | Exterior Designs





Second Floor

- THE MARTIN HIGHLIGHTS**
- The foyer opens to an expansive great room with a view to the open stairs.
 - The spacious kitchen includes a center island and opens into the well-lit breakfast area.
 - The master bedroom includes a tray ceiling, walk-in closets, and a private bath that features a dual-sink vanity, a Roman tub, a separate shower with a seat, and a private toilet area.
 - The second floor features a loft that overlooks the great room, an additional bedroom, and a bath.
 - Additional features of this home include a convenient first-floor laundry and a powder room.
 - Nine-foot ceilings throughout the first floor.